



CONVENIENCE STORE & TRAVEL PLAZA PORTFOLIO

900 NW HUNTER DR SUITE 2 S

BLUE SPRINGS, MO 64015

(816) 229 - 6090

FAX: (816) 229 - 6093

www.MAC-CONST.COM

3 REASONS TO CONSIDER WORKING WITH M.A.C.

1) 35 YEARS OF C-STORE EXPERIENCE

2) 154 C-STORES BUILT TO DATE

3) TURN KEY PROCESS INCLUDING:

- **ARCHITECTURAL & ENGINEERING SERVICES**
 - **CONSTRUCTION & SITE DEVELOPMENT**
 - **STORE FIXTURES & EQUIPMENT**
 - **PETROLEUM INSTALLATION**
 - **OPERATIONAL CONSULTING**

BAKKEN TRAVEL PLAZA



Project Data

13,386 sf - Travel Plaza/Restaurant
5,286 sf - Fuel Canopies (2)

Services Provided

Master Planning, Architecture,
Interior Design, Structural,
Mechanical, Electrical, and
Operational consulting.

Petroleum Fueling Station & Travel Plaza

M.A.C. Corp provided master planning, architectural, engineering, and general contractor services for this 13,386 sf Travel Plaza in North Dakota. M.A.C. Corp was also the key operational consultant and advisor to the owners and managers of the retail operation.

Completion Date: October, 2013

KCI CAR CARE



Project Data

3,276 sf - C-Store/Service Center
3,072 sf - Fuel Canopy

Services Provided

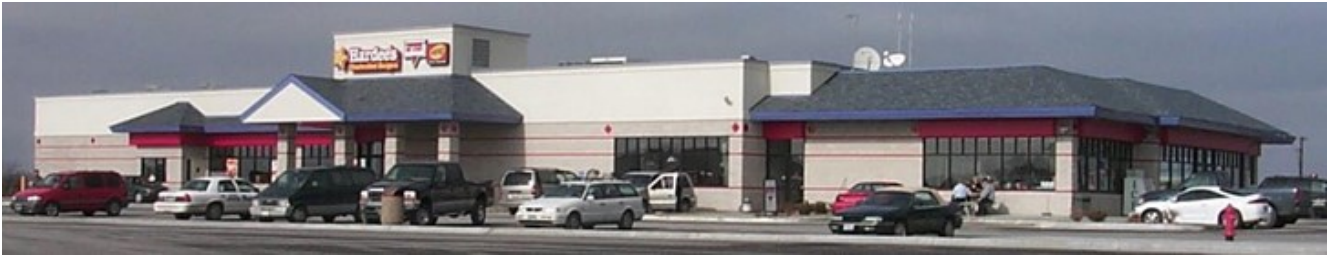
Master Planning, Architecture,
Interior Design, Structural,
Mechanical, and Electrical

Petroleum Fueling Station & Convenience Store

M.A.C. Corp provided master planning and general contractor services for this Convenience Store and Auto Service Center located within KCI Airport. M.A.C. was responsible for working with Federal Aviation and Airport authorities in order to meet all regulations and requirements.

Completion Date: March, 2011

KANSAS TURNPIKE AUTHORITY



Project Data

17,309 sf - C-Store/Restaurant
9,856 sf - Fuel Canopies (3)
12,700' - Highway Paving
2,815' - Highway Bridges (3)

Services Provided

Master Planning, Architecture,
Civil Engineering,

Petroleum Fueling Station & Convenience Store

M.A.C. Corp provided master planning, general contracting, and engineering services for a KTA Service Area. M.A.C. Corp was responsible for coordinating with the local and state authorities to ensure all regulations and expectations were met for the construction of 12,700 feet of highway, 3 bridges, 3 fueling centers, and a 17,309 sf Convenience store which included 3 food programs and dining area.

Completion Date: May, 2002

CONVENIENCE STORES



TRAVEL PLAZAS



CONTACT US

MISSOURI OFFICE:

900 NW HUNTER DR SUITE 2 S

BLUE SPRINGS, MO 64015

OFFICE: (816) 229 - 6090

FAX: (816) 229 - 6093

HAVE QUESTIONS? EMAIL US AT:

ROBWANDREW@MAC-CONST.COM

HWINGERT@MAC-CONST.COM



WWW.MAC-CONST.COM

M.A.C.
CORPORATION
DEVELOPERS • ENGINEERS • GENERAL CONTRACTORS

900 NW HUNTER DR SUITE 2 S

BLUE SPRINGS, MO 64015

(816) 229 - 6090

FAX: (816) 229 - 6093

www.MAC-CONST.COM

COPYRIGHT © 2014 M.A.C. CORPORATION

**ALL INFORMATION CONTAINED IN THIS DOCUMENT IS
PROPERTY OF M.A.C. CORPORATION AND IS FOR MARKETING
AND PROMOTIONAL PURPOSES ONLY. USE OF INFORMATION OR
IMAGES IN THIS DOCUMENT IS PROHIBITED WITHOUT PRIOR
CONSENT OF M.A.C. CORPORATION**